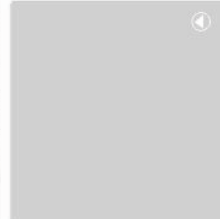
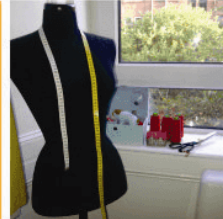
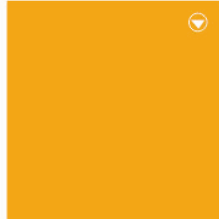
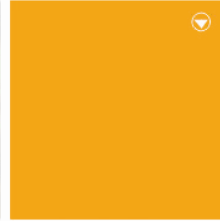
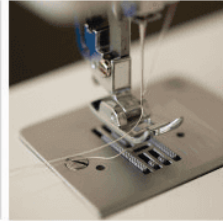
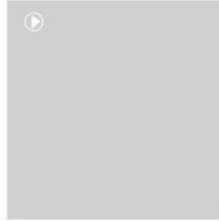




JCT LIMITED  
— SINCE 1946 —



vertical integrated solution from fibre to garments

| *Work and protective  
clothing collection* |

# *Decades of Trust, Woven into Reality*



JCT LIMITED

*Progressive, dynamic and customer oriented JCT Limited, a blue-chip company of the \$160 million Thapar group, is one of the largest composite textiles mills in Northern India, with Integrated Textile facilities geared with technological superiority and skilled manpower with capacity of over 5 Million meters of fabrics every month .*

*JCT's wide product range of weaves like Twills, Satins, Dobbies , Oxfords, Ducks, Canvases & Yarn dyed fabric in weight range of 110gsm to 490gsm can be processed as RFGD, Bleached, dyed & Printed in special finishes like Teflon, Nano, Resin, Wrinkle Free, Easy Care, Flame Retardant, Water Repellent, Rain & Stain Proof and many other finishes required by the specialised industries across the globe.*

*JCT's versatility is extended in the wide combination of fabric blends comprising 100% Cotton, Poly Cotton, CVC, Cotton Nylon , 100% Polyester & 100% Nylon & Inherently Flame Retardant fabrics using specialised blends of Aramids, Modacrylics, FR Viscose & Antistatic fibres.*

*With all these wide range of production capabilities JCT has entered into Garmenting in year 2008 to service their vertical setup by providing complete solution from fibre to Garment by producing wide range of garments in Work wear, Protective wear, Fashion & Sportswear.*

*To ensure high quality fabrics of international Standards. JCT is certified to ISO9001, ISO14001, SA8000, Oekotex, GOTS, Fairtrade, Global Recycle and BCI. JCT has invested heavily in modern technology at every stage of production. Advanced machineries from across the globe have been installed in spinning, weaving and wet processing. Besides, the company has a full –fledged Research & development cell to continuously enhance fabric value and maintain quality standards.*

*Driven by the spirit to diversify and vision to succeed, JCT is not only concentrating on expanding it's organization, but is also committed to globally set social compliance parameters. Today , the company has a huge customer base in USA, UK, Europe , Mauritius, South America, Far east and middle east. JCT promises to build on the fundamentals, mutual growth and positive business relationship.*



Industrial Work Wear	4-11
Hi-Vis Work Wear	12-15
Protective Wear	16-17
Hospital Wear	18-19
Horeca	20-21
Certification	22
How to reach us	23



# Industrial Work Wear



Art No. CVWW071/0014

Sizes - S-4XL

	<b>Body Fabric</b>
Sort No.	40547
Content	65% Polyester, 35% Cotton
Weave	2/1 TWILL
Count	14X14
Construction	88X52
Weight	245 GSM

Descriptions:  
Two way Zip, 2 pockets at the chest, Elastic at the back waist,  
2 side cut pockets, 1 pocket at the side leg & 2 pockets at the back area



## Jacket

## Trouser

	<b>Body Fabric</b>	<b>Trim Fabric</b>	<b>Body Fabric</b>	<b>Trim Fabric</b>
Sort No.	41947	41947	41947	41947
Content	35% Cotton 65% Polyester	35% Cotton 65% Polyester	35% Cotton 65% Polyester	35% Cotton 65% Polyester
Weave	2/1 TWILL	2/1 TWILL	2/1 TWILL	2/1 TWILL
Count	14x14	14x14	14x14	14x14
Construction	88x52	88x52	88x52	88x52
Weight	250 GSM	250 GSM	250 GSM	250 GSM

Descriptions:  
Jacket: Buttons at front from top to bottom, 2 chest pockets with flap & buttons,  
1 security pocket with flap on upper sleeve arm. Elastic at the side waist & adjustable sleeve opening.  
Trouser : Elastic waist band, 2 side cut pockets with 1 key pocket. 2 pockets with flap at side leg.  
1 phone pocket on side seam, 1 pocket at back, knee darts for the comfort.



Art No. JKWW003/0014

Art No. TRWW003/0014

Sizes - S-4XL





ART NO. JKWW013/0014

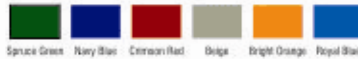
Sizes - S-4XL

### Body Fabric

Sort No.	3438
Content	100% Cotton
Weave	3/1 TWILL
Count	20X12
Construction	112X58
Weight	240 GSM

### Descriptions:

Snap fastening at front opening from top to bottom. 2 patch pockets with flap and snap button at chest, 2 side pockets at front, adjustable sleeve cuff opening.



	Body Fabric	Trim Fabric
Sort No.	40837	40837
Content	65% Polyester, 35% Cotton	65% Polyester 35% Cotton
Weave	2/1 TWILL	2/1 TWILL
Count	14X14	14X14
Construction	89X52	89X52
Weight	240 GSM	240 GSM

### Descriptions:

Zipper at front from top to bottom and flap fastening with velcro & button. 2 patch pockets with flap and snap button at the chest & bottom, adjustable sleeves cuff opening with velcro flap. Detachable Anti pilling knitted lining with zipper.



Art No. JKWW004/0014

Sizes - S-4XL





Art No. JKWW059/0014

Sizes - S-4XL

	Body Fabric	Trim Fabric
Sort No.	40547	40984
Content	65% Polyester 35% Cotton	52% Cotton 48% Polyester
Weave	2/1 TWILL	4/1 SATIN
Count	14X14	24X10
Construction	88X52	128X52
Weight	245 GSM	265 GSM

**Descriptions:**

Front placket opening with zip to top of collar and velcro fastening, 2 chest pockets and 2 front pockets. Inside 100% polyester quilted lining.



	Body Fabric	Trim Fabric
Sort No.	40837	24501
Content	65% Polyester, 35% Cotton	100% Nylon
Weave	2/1 TWILL	Plain
Count	14X14	500DX500D
Construction	89X52	51X40
Weight	240 GSM	230 GSM

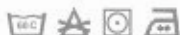
**Descriptions:**

Zipper at front from top to bottom. 2 patch pockets with flap and velcro at the chest & bottom, Reinforced Cordura fabric at front & back yoke pocket & bottom opening. lined with Anti pilling knitted fabric.



Art No. JKWW012/0014

Sizes - S-4XL





ART NO. JKWW011/0014

Sizes - S-4XL

	Body Fabric	Trim Fabric
Sort No.	40547	40547
Content	65% Polyester 35% Cotton	65% Polyester 35% Cotton
Weave	2/1 TWILL	2/1 TWILL
Count	14X14	14X14
Construction	88X52	88X52
Weight	245 GSM	245 GSM

**Descriptions:**

Snap fastening at front opening form top to bottom. 1 patch pocket with flap at left chest area & 2 multiple patch pockets at right chest area, 1 phone pocket with flap stitched upon the right chest area. 2 'L' shape pockets at front near the bottom area.



**Jacket**

	Body Fabric
Sort No.	3201
Content	100% Cotton
Weave	3/1 TWILL
Count	16X12
Construction	98X44
Weight	240 GSM

	Trim Fabric
Sort No.	3201
Content	100% Cotton
Weave	3/1 TWILL
Count	16X12
Construction	98X44
Weight	240 GSM

**Trouser**

	Body Fabric
Sort No.	3201
Content	100% Cotton
Weave	3/1 TWILL
Count	16X12
Construction	98X44
Weight	240 GSM

	Trim Fabric
Sort No.	3201
Content	100% Cotton
Weave	3/1 TWILL
Count	16X12
Construction	98X44
Weight	240 GSM

**Descriptions:**

Jacket: Button fastening at front opening form top to bottom. 1 patch pocket with flap at left chest area & 2 multiple patch pockets at right chest area, 1 phone pocket with flap stitched upon the right chest area. 2 'L' shape pockets at front near the bottom area. adjustable button at the side bottom.

Trouser: 2 side cut pockets, 2 flap pockets fastening with buttons at the back. 2 pockets at sides with phone & security pocket. Self fabric knee pockets with inside opening for knee pads.



ART NO. JKWW006/0014

Sizes - S-4XL







ART NO. BBWW058/0014

Sizes - S-4XL

	Body Fabric	Trim Fabric
Sort No.	7495	24501
Content	100% Cotton	100% Nylon
Weave	3/1 TWILL	Plain
Count	16X12	500Dx500XD
Construction	106X54	51X40
Weight	270 GSM	230 GSM

**Descriptions:**

Two way zipper opening at front, 1 patch pocket with flap & phone pocket at chest, elastic at the back for adjustment. 2 side opening pockets, 2 back pocket with flap & button, adjustable buckles, Loop for stealth knife, reinforced cordura knee pockets with inside opening for knee pads.



**Jacket**

**Body Fabric**

Sort No.	40713
Content	65% Cotton 35% Polyester
Weave	Matty
Count	1/10X1/10
Construction	84X56
Weight	340 GSM

**Trouser**

**Body Fabric**

Sort No.	40713
Content	65% Cotton 35% Polyester
Weave	Matty
Count	1/10X1/10
Construction	84X56
Weight	340 GSM

**Descriptions:**

Jacket: Button at front from top to bottom with flap, 2 chest pocket with flap & button, 2 'L' shape pockets at front, adjustable snap button at side bottom, adjustable sleeve cuff opening.

Trouser : 2 'L' shape front Pockets, 2 patch pockets with flap on side legs, 2 patch pockets at back. Elastic at side waist. Reinforced self fabric knee pockets with inside opening for knee pads.



ART NO. JKWW016/0014

Sizes - S-4XL





Art No. TRWW066/0014

Sizes - S-4XL

	Body Fabric	Trim Fabric
Sort No.	40837	41654
Content	65% Polyester, 35% Cotton	70% Cotton, 30% Polyester
Weave	2/1 TWILL	PLAIN
Count	14X14	40X40
Construction	88X52	113X76
Weight	245 GSM	120 GSM

**Descriptions:**

Zip fly, elastic at the back waist, 2 side pockets & 2 pockets at the back with flap & snap button, 1 cargo pocket with flap at the left side, 1 side pocket for the communication device & knee pockets for knee guard.



	Body Fabric
Sort No.	40713
Content	65% Cotton 35% Polyester
Weave	Matty
Count	1/10X1/10
Construction	84X56
Weight	340 GSM

**Descriptions:**

2 'L' shape front Pockets, 2 patch pockets with flap on side legs, 2 patch pockets at back. Elastic at side waist. Reinforced self fabric knee pockets with inside opening for knee pads.



Art No. TRWW016/0014

Sizes - S-4XL





Art No. TRWW060/0014

Sizes - S-4XL

	Body Fabric	Trim Fabric
Sort No.	40837	40837
Content	65% Polyester, 35% Cotton	65% Cotton, 35% Polyester
Weave	2/1 TWILL	2/1 TWILL
Count	14X14	14X14
Construction	89X52	89X52
Weight	245 GSM	245 GSM

**Descriptions:**

2 side Pockets, 2 Back Pockets with flap fastening with velcro, 1 Phone Pocket & 2 side pockets with flap & snap button. Reinforced Cordura knee pockets with inside opening for knee pads.



	Body Fabric
Sort No.	24501
Content	100% Nylon
Weave	Plain
Count	500DX500D
Construction	51X40
Weight	230 GSM

	Trim Fabric
Sort No.	40837
Content	65% Polyester, 35% Cotton
Weave	2/1 TWILL
Count	14X14
Construction	89X52
Weight	240 GSM

**Descriptions:**

2 Front Pockets, 2 Back Pockets, 1 Phone Pocket & Plastic ID card holder attached on side pocket. Reinforced Cordura knee pockets with inside opening for knee pads.



Art No. TRWW024/0014

Sizes - S-4XL



## Hi-Vis Work Wear



Art No. TRHV055/0014

Sizes - S-4XL

### Body Fabric

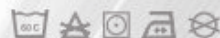
Sort No.	40857
Content	65% Cotton 35% Polyester
Weave	3/1 TWILL
Count	150DX10
Construction	121X60
Weight	240 GSM

### Trim Fabric

Sort No.	40984
Content	52% Cotton 48% Polyester
Weave	4/1 SATIN
Count	24X10
Construction	128X52
Weight	265 GSM

### Descriptions:

Zip fly, elastic at the back waist, 2 side pockets & 2 pockets at the back with flap & snap button, 1 cargo pocket with flap at the side left, 1 side pocket for the communication device & knee pocket for knee guard.



# Hi-Vis Work Wear



Art No. TRHV019/0014

Sizes - S-4XL

	Body Fabric	Trim Fabric
Sort No.	46135	24501
Content	60% Cotton 38% Polyester 2% Lycra	100% Nylon
Weave	4/1 SATIN	Plain
Count	30X220D	500DX500D
Construction	186X74	51X40
Weight	255 GSM	230 GSM

**Descriptions:**

Zip fly, 1 side pocket, 1 pocket at the back with yoke, elastic at the side seams. Reflective tape at the leg area both front & back.



	Body Fabric	Trim Fabric
Sort No.	40857	40984
Content	65% Cotton 35% Polyester	52% Cotton 48% Polyester
Weave	3/1 TWILL	4/1 SATIN
Count	150DX10	24X10
Construction	121X60	128X52
Weight	240 GSM	265 GSM

**Descriptions:**

Upper body with pocket & adjustable straps, trouser Zipper fly at pant, side pockets with 2 flap pockets at the back & 1 tool pocket at the side seam, reflective tape at the leg area at both front & back. reinforced Cordura knee pockets with inside opening for knee pads.



Art No. BBWW053/0014

Sizes - S-4XL



# Hi-Vis Work Wear



Art No. CVHV057/0014

Sizes - S-4XL

	<b>Body Fabric</b>	<b>Trim Fabric</b>
Sort No.	46135	46357
Content	60% Cotton 38% Polyester 2% Lycra	45% Cotton, 55% Polyester
Weave	4/1 SATIN	DOBBY
Count	30X220D	80DX10
Construction	186X74	210X88
Weight	255 GSM	263 GSM
Lining	100% Polyester, 75 GSM	

**Descriptions:**

2 way zipper opening with flap & velcro, 2 chest pockets with flap, detachable hood, 2 side pocket with reverse opening, reflective tape at back & front yoke sleeve, chest, waist & leg area. Adjustable sleeve & leg opening



	<b>Body Fabric</b>	<b>Trim Fabric</b>
Sort No.	46135	40837
Content	60% Cotton 38% Polyester 2% Lycra	65% Polyester 35% Cotton
Weave	4/1 SATIN	2/1 TWILL
Count	30X220D	14X14
Construction	186X74	89X52
Weight	255 GSM	240 GSM
Lining	100% Polyester, 280 GSM	

**Descriptions:**

Zipper at front from top to bottom, 1 vertical zipper pocket at chest, 2 side pocket with zipper, reflective tape at the front & back yoke, chest, waist & sleeve area. inside lined with anti pilling knitted fabric.



Art No. JKHV017/0014

Sizes - S-4XL





Art No. JKHV054/0014

Sizes - S-4XL

	Body Fabric	Trim Fabric
Sort No.	22265	22265
Content	100% Polyester	100% Polyester
Weave	Plain	Plain
Count	75DX155D	75DX155D
Construction	103X60	103X60
Weight	137 GSM	137 GSM
Lining	100% Polyester, 50 GSM	

**Descriptions:**

Zipper at front from top to bottom and flap fastening with button. 1 chest pocket with flap & ID card holder, 2 flap pocket near the bottom. Detachable hood & winter lining. Reflective tape at the front & back yoke, chest, sleeve & bottom area continue at the back Lined with 100% polyester mesh.



**Reversible**

	Body Fabric	Trim Fabric
Sort No.	22265	22265
Content	100% Polyester	100% Polyester
Weave	Plain	Plain
Count	75DX2/155D	75DX2/155D
Construction	103X60	103X60
Weight	137 GSM	137 GSM
Inner	100% Polyester, 280 GSM	

**Descriptions:**

Reversible Zipper at front from top to bottom. Reflective tape at the front & back yoke, chest & bottom area continue at the back, 100 % polyester inner knitted fabric.



Art No. JKHV050/0014

Sizes - S-4XL





Art No. CVFR056/0014

Sizes - S-4XL

	<b>Body Fabric</b>
Sort No.	32037
Content	55% Modacrylic 43% Cotton 2% Anst
Weave	Plain
Count	2/32X2/32
Construction	62X52
Weight	175 GSM

**Descriptions:**

2 way zipper opening & flap, 1 flap pocket with ID & Communication device pocket at chest area, 2 cargo pockets at the side seams, 1 security pocket on sleeve upper arm. Elastic at the back waist, 2 side pockets, 2 back pockets with flap & velcro Reflective tape at sleeve & leg area.  
Note: Fabric, Thread, Zipper & reflective tape are from fire retardant material.







Art No. CVFR061/0014

Sizes - S-4XL

### Body Fabric

Sort No.	:	32005
Content	:	93% M-Aramid 5% P-Aramid 2% Anst
Weave	:	TWILL
Count	:	2/32X2/32
Construction	:	92X48
Weight	:	220 GSM

### Descriptions:

2 way zipper opening & flap fastening with buttons, 1 pocket & zipper at the chest, elastic at the back waist, 2 side & 2 back pockets with flap & buttons, 1 pocket at the side seam. Reflective tape at sleeve & leg.

Note: Fabric, Thread, Zipper & reflective tape are made from fire retardant material.



		<b>Body Fabric</b>
Sort No.	:	32004
Content	:	93% M-Aramid 5% P-Aramid 2% Anst
Weave	:	Plain
Count	:	2/36X2/36
Construction	:	62X54
Weight	:	150 GSM

### Descriptions:

2 way zipper opening & flap, 1 flap pocket with ID & Communication device pocket at chest area, 2 cargo pockets at the side seams, 1 security pocket on sleeve upper arm, elastic at the back waist, 2 side pockets, 2 back pockets with flap & velcro Reflective tape at sleeve & leg area.

Note: Fabric, Thread, Zipper & reflective tape are made from fire retardant material.



ART No. CVFR067/0014

Sizes - S-4XL





Art No. APWW068/0014

Sizes - S-2XL

	<b>Body Fabric</b>
Sort No.	36376
Content	100% Cotton
Weave	3/1 TWILL
Count	20X20
Construction	116X62
Weight	220 GSM

Descriptions: Button up coat with 2 pockets near the bottom, princess seam for the body fitting.



Art No. APWW069/0014

Sizes - S-2XL

	<b>Body Fabric</b>
Sort No.	40545
Content	65% Polyester 35% Cotton
Weave	2/1 TWILL
Count	20X20
Construction	100X62
Weight	200 GSM

Descriptions: Button up coat with 1 pocket at the chest & 2 pockets near the bottom.





Art No. APWW070/0014

Sizes - S-2XL

<b>Sort No.</b>	40545
<b>Content</b>	65% Polyester 35% Cotton
<b>Weave</b>	2/1 TWILL
<b>Count</b>	20X20
<b>Construction</b>	100X62
<b>Weight</b>	200 GSM

Descriptions: Zipper and Button up coat with 1 pen pocket at the chest & 2 pockets near the bottom.



Art No. TRWW065/0014

Sizes - S-2XL

<b>Sort No.</b>	36376
<b>Content</b>	100% Cotton
<b>Weave</b>	3/1 TWILL
<b>Count</b>	20X20
<b>Construction</b>	116X62
<b>Weight</b>	220 GSM

Descriptions: All-round elastic at waist, 2 side pockets, 1 pocket at the back.





Sizes - 90cm X 100cm

Art No. APWW074/0014

Sort No.	38168
Content	100% Cotton
Weave	2/1 TWILL
Count	20X20
Construction	119X56
Weight	200 GSM

Descriptions: Half apron with waist tie up.



Sizes - 90cm X 100cm

Art No. APWW075/0014

Sort No.	40837
Content	65% Polyester 35% Cotton
Weave	2/1 TWILL
Count	14X14
Construction	89X52
Weight	245 GSM

Descriptions: Apron with pocket & waist tie up.



Sizes - 70cm X 100cm

Art No. APWW073/0014

Sort No.	70219
Content	100% Cotton
Weave	3/1 TWILL
Count	16X12
Construction	99X48
Weight	255 GSM

Descriptions: Bib apron with neck & waist tie up.



Sizes - 70cm X 100cm

Art No. APWW077/0014

Sort No.	70219
Content	100% Cotton
Weave	3/1 TWILL
Count	16X12
Construction	99X48
Weight	255 GSM

Descriptions: Apron with waist tie up.



Art No. JKWW076/0014

Sizes - S-2XL

Sort No. 36376  
Content 100% Cotton  
Weave 3/1 TWILL  
Count 20X20  
Construction 116X62  
Weight 220 GSM

Descriptions:  
Jacket with mandarin collar, front opening by removable buttons.



Art No. TRWW014/0014

Sizes - S-2XL

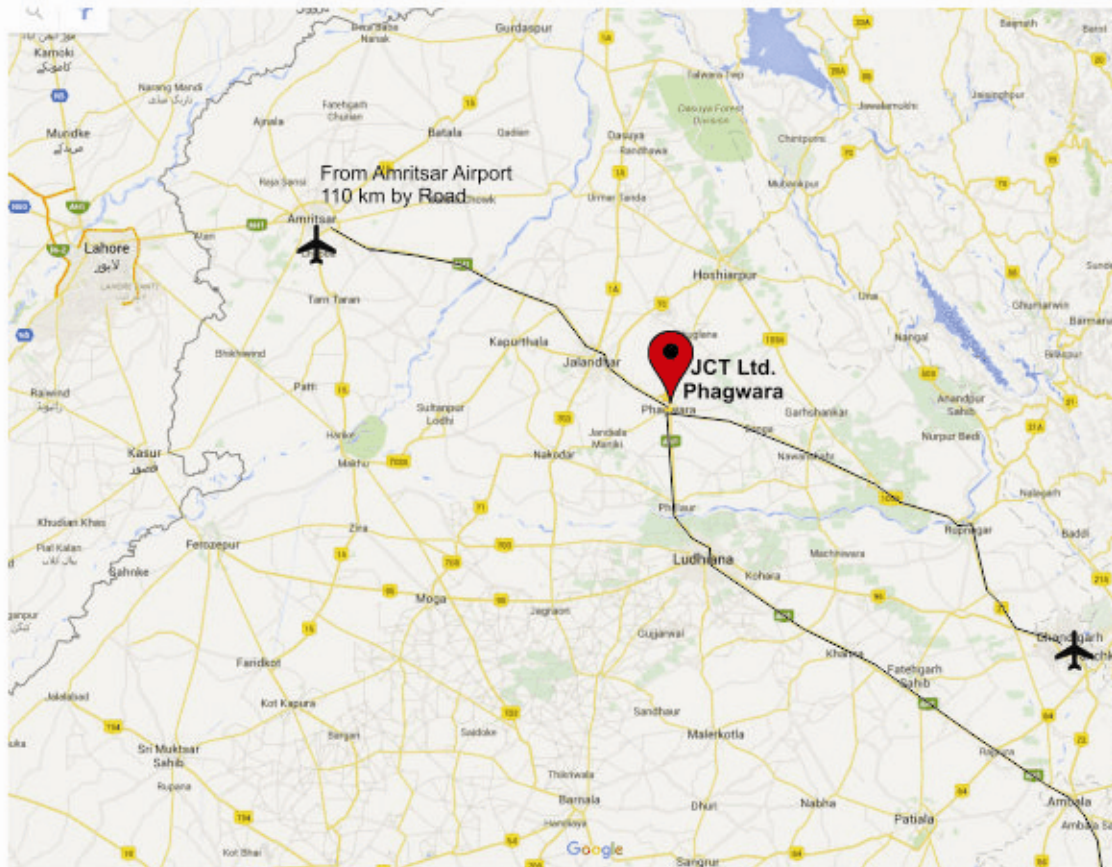
Sort No. 40501  
Content 65% Polyester  
35% Cotton  
Weave Yarn Dyed  
Count 14X14  
Construction 61X58  
Weight 240 GSM

Descriptions:  
Zipper fly & Elastic at waist, 2 side pockets, 1 pocket with flap at the back.





## How to reach us....



From Chandigarh Airport  
130 km by Road



From New Delhi Airport  
350 km by Road



Corporate office – New Delhi.  
305-309 Rattanjiyoti Building, 18, Rajendra Place  
New Delhi - 110008  
Delhi - India  
Phone : 0091-11-46290000  
Fax : 0091-11- 28512222

Manufacturing & Marketing Office – Phagwara  
JCT Limited Textiles Manufacturing Plant,  
Phagwara – 144401,  
Punjab, India  
Tel: 0091-1824-305008  
Fax: 0091-1824- 261191/266389

Registered Office – Hoshiarpur  
Village Chohal  
Hoshiarpur - 146024  
Punjab - India.



## JCT LIMITED

— SINCE 1946 —

---

G. T. Road, PHAGWARA-144401 (Punjab) India

---

Tel. : +91-1824-305008, 304058

Fax : +91-1824-261191

E-mail : [uppal@jctltd.com](mailto:uppal@jctltd.com)  
[jaspalrana@jctltd.com](mailto:jaspalrana@jctltd.com)  
[garments@jctltd.com](mailto:garments@jctltd.com)

Web : [www.jct.co.in](http://www.jct.co.in)

---